



We Care with Passion

PT SARANA MEDITAMA METROPOLITAN Tbk

Public Expose

  021 2977 9977  emc.id  [rs.emc](https://www.instagram.com/rs.emc)  [RS EMC](https://www.youtube.com/channel/UCRS-EMC)  [rumahsakit.EMC](https://www.facebook.com/rumahsakit.EMC)

AGENDA 1

COMPANY OVERVIEW

BOARD OF DIRECTORS



Jusup Halimi

President Director



Juniwati Gunawan

Vice President Director



Meta Dewi Thedja

Director



Kusmiati

Director



Nailufar

Director



Armen Antonius Djan

Director

BOARD OF COMMISSIONERS



Robert Pakpahan

*President Commissioner &
Independent Commissioner*



Unggung Cahyono

Independent Commissioner

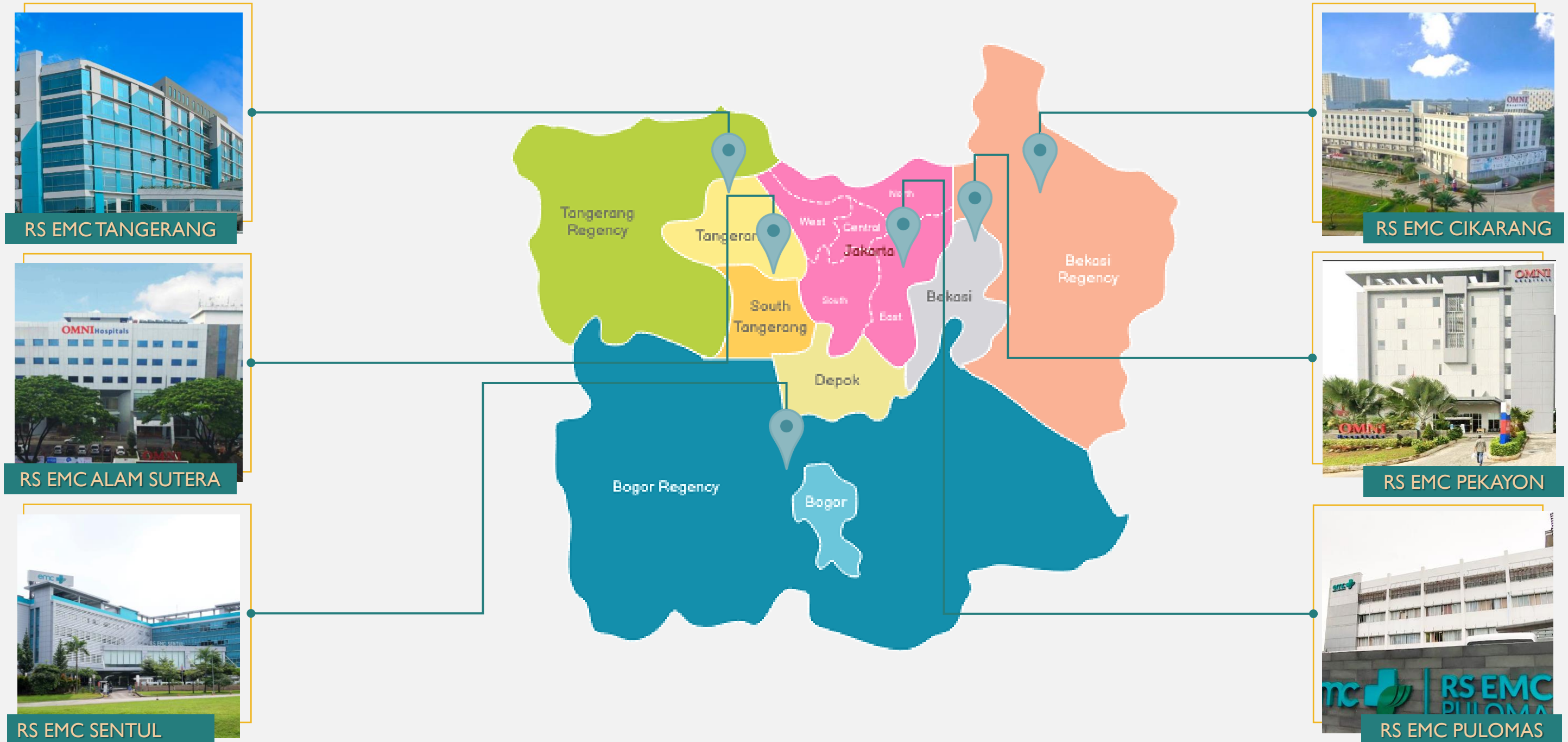


Marianna Sutadi

Independent Commissioner

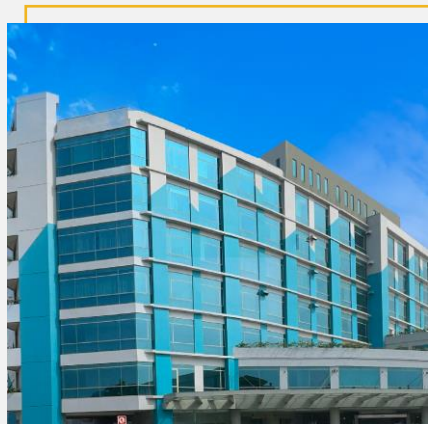
EMC HEALTHCARE

OUR HOSPITALS



EMC HEALTHCARE

OUR HOSPITALS



RS EMC TANGERANG

- Was established in 1991.
- Currently located at Jl. KH. Hasyim Ashari No. 24, Buaran Indah, Tangerang, Banten 15119.



RS EMC ALAM SUTERA

- Was established in 2007.
- Currently located at Jl. Alam Sutera Boulevard Kav. 25, Tangerang Selatan, Banten 15325.



RS EMC SENTUL

- Was established in 2013.
- Currently located at Jl. MH. Thamrin Kav. 57, Sentul City, Bogor, West Java 16810.



RS EMC CIKARANG

- Was established in 2016.
- Currently located at Jl. Raya Cikarang, Komp. The Oasis Kav. 1, South Cibirusah, Bekasi 17530.



RS EMC PEKAYON

- Was established in 2018.
- Currently located at Jl. Pulo Ribung No. 1, Pekayon Jaya, Bekasi, West Java 17148.



RS EMC PULOMAS

- Was established in 1972.
- Currently located at Jl. Pulomas Barat VI No. 20, East Jakarta 13210.



OUR VISION & MISSION

Our vision is to become the most trusted and accessible healthcare for all levels of society in order to advance quality of the healthcare industry in Indonesia.

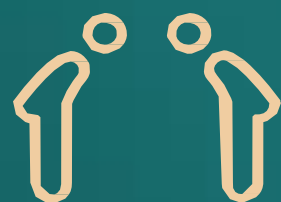
Our mission is to put patients' needs and safety as our utmost priority, to promote a culture of continuous learning, innovation, and improvement, and also to build healthcare centers of excellence with international standard quality.



OUR CORE VALUES



Empathy
& Integrity



Meaningful
& Respect



Competence
& Innovation



EMC HEALTHCARE

Central of Excellence in the Following Specialities



Orthopedic



Neuroscience



Urology



Cardiology



Fertility



Kawasaki



Oncology



Digestive

Acknowledged Healthcare *



GPs & Specialists
534



Healthcare Centers
6



Operational Beds
1,017



Nurses and Medical Staff
819



Pharmacy
6

*as of 31 October 2021

MEDICAL ACCOMPLISHMENT

RS EMC Pulomas



Received a certificate of appreciation from Mayor of East Jakarta – as a platinum company that implements CSR through the BPJS Employment program for vulnerable workers in East Jakarta.



Received an award and appreciation from BPJS Employment as The Best Service Center for Workplace Accidents in DKI Jakarta of the Year 2021.

RS EMC Sentul



Received the Bapeten 2021 award in the field of Nuclear Safety and Security for Diagnostic and Interventional Radiology activities.

RS EMC Pekayon



Received an award and appreciation from BPJS Employment as The Service Center for Workplace Accidents with Support for The Vulnerable Workers.

AGENDA 2

INITIATIVE HIGHLIGHTS

STRATEGIC INITIATIVES

Throughout the year, SAME has accomplished its goals to strengthen and expand its business in the health industry.



71.88%

Acquisition of
SAME by PT
Elang Mahkota
Teknologi Tbk

November 2020



IDR1,199T

Rights Issue with
Providing Pre-
emptive Rights
("Rights Issue I")

Maret 2021



IDR2,499T

Rights Issue with
Providing Pre-
emptive Rights
("Rights Issue II")

July 2021



99.9999%

Acquisition of PT
Elang Medika
Corpora ("EMC")

August 2021



66%

Acquisition of PT
Kedoya Adyaraya
Tbk ("RSGK")

November 2021



5 Branches

Identity Changes on
Hospital Branches

Accomplished

STRATEGIC INITIATIVES



Acquisition of SAME

In November 2020, there were directly change of control to PT Sarana Meditama Metropolitan Tbk (SAME) through the acquisition by PT Elang Mahkota Teknologi (EMTK) of 71.88% of SAME shares owned by PT Omni Health Care (OHC).



Rights Issue I

In March 2021, SAME has conducted a capital increase by granting pre-emptive rights of 5,999,710,000 new shares so that the total funds received by SAME amounted to IDR1,199,942,000,000.



Rights Issue II

In July 2021, SAME has conducted a capital increase by granting pre-emptive rights of 5,229,922,545 new shares so that the total funds received by SAME amounted to IDR2,499,902,976,510.



Acquisition of EMC

In August 2021, there were directly change of control to PT Elang Medika Corpora (EMC) through the acquisition by SAME of 99.9999% of EMC shares owned by EMTK.



Acquisition of RSGK

In November 2021, there were directly change of control to PT Kedoya Adyaraya Tbk (RSGK) through the acquisition by SAME of 66% of RSGK shares.



Identity Changes on Hospital Branches

Starting November 2021, SAME changed its Hospital Group identity, where the changes included changing the name and logo of the hospital, which was previously called **OMNI** and has now become **EMC**, as well as changing the hospital tagline so that all of them became “**We Care With Passion**”.

OUR NEW MEMBER

Following the Acquisition of RSGK by SAME, SAME has welcomed Grha Hospitals Group to the ecosystem to strengthen EMC Healthcare position in the Health Industry.



Grha Kedoya

Jl. Panjang Arteri No. 26
Kedoya Utara, Kebon Jeruk, West Jakarta,
DKI Jakarta 11520.

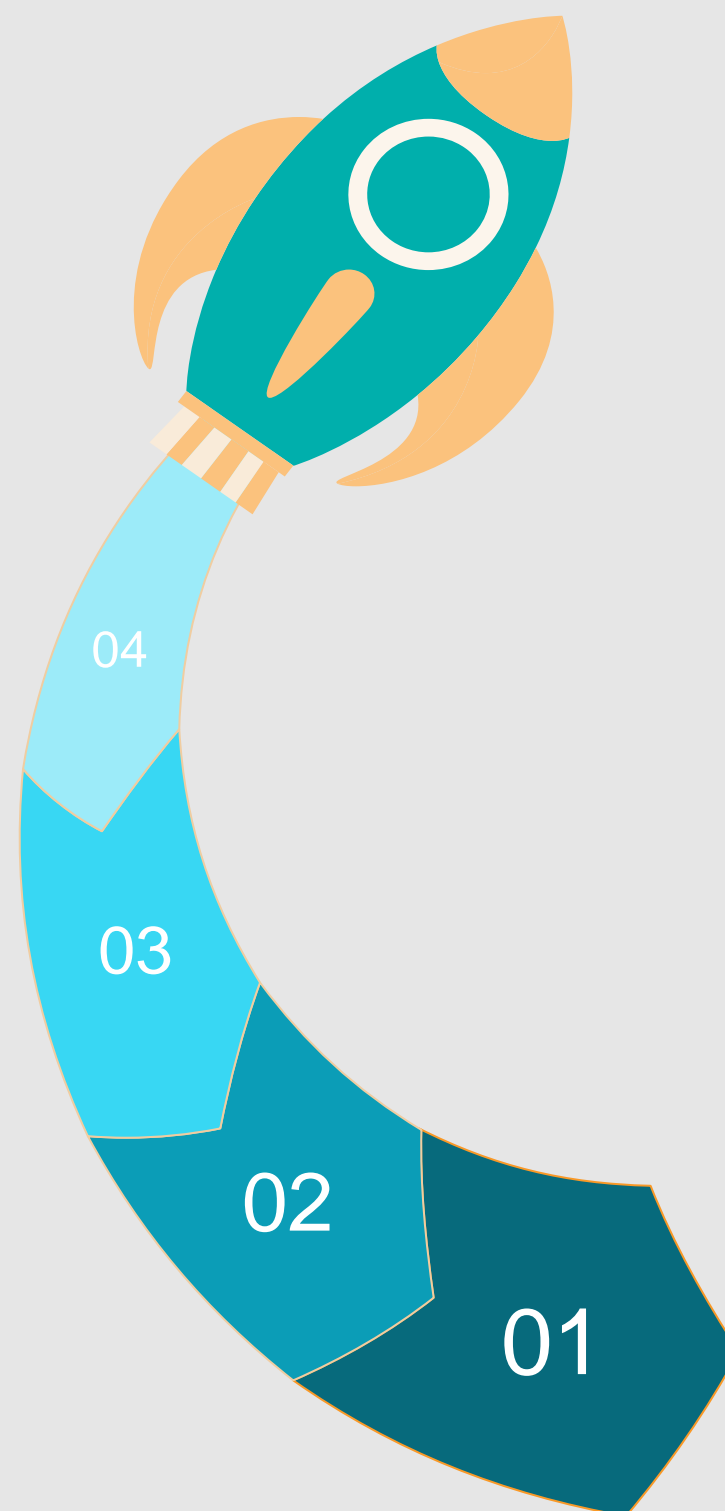


Grha MM2100

Jl. Kalimantan Blok CB-1
Kawasan Industri MM2100, West Cikarang,
Bekasi, West Java 17530.

HOSPITAL DIGITALIZATION INITIATIVES

To achieve the best **Clinical Outcomes, Patient Safety and Patient Experience**, EMC Healthcare will transform its organization to be a digital Hospital Group.



Digital Hospital

EMC Healthcare is currently working on the integrated hospital information system to utilize the Information and Technology System to optimize patient experience.

Asset Management

Through SAMRS, EMC Healthcare has a platform to maintain and manage the record and valuation of its assets and properties.

HRIS

With the implementation of SunFish, EMC Healthcare simplify the administrative tasks via a single platform that enhances analytical and data management.

IT Infrastructure & Integration

EMC Healthcare currently is enhancing the infrastructure and integration of the information system, including but not limited to utilizing the cloud base and developing the DRC.

EMPLOYEE IMPROVEMENT INITIATIVES

EMC Healthcare committed to improve its employees performance in order to provide qualified services to its valued patients.*

≥ 110 SCHOLARSHIPS

has been given to employees in pursuing the following courses:

- Master of Nursing
- Master of Hospital Administration
- Bachelor of Nursing
- Bachelor of Professional Development in Nursing
- Bachelor of Physiotherapy

≥ 360 TRAINING

has been held for the employees, with the following topics:

- Basic Life Support
- Infectious Disease Emergency
- Infection Prevention and Control
 - Disaster & Fire Safety
 - Hospital Management
- Leadership Skills Improvement
 - English Learning
 - And more.

RS EMC
SENTUL

RS EMC
PEKAYON

RS EMC
ALAM SUTERA

RS EMC
TANGERANG

RS EMC
CIKARANG

RS EMC
PULOMAS

≥ 90 WORKSHOPS

has been held for the employees, with the following topics:

- Hospital Competence Improvement
- Hospital Digitalization
- Hospital Audit Implementation
- Patient Safety and Risk Management
- And more.

≥ 10 CERTIFICATION

has been held for the employees, with the following specifications:

- Professional Ethics
- Medical Check Up
- Food Handler
- And more.

≥ 120 SOCIALIZATION

has been held for the employees, with the following topics:

- COVID-19 Prevention and Control
- Medical Emergency
- New Medical System Implementation
- Legal Protection at Hospital
- General Orientation for New Employees
- And more.

**as of 31 October 2021*

ANTICIPATION OF COVID-19

During this pandemic, EMC Healthcare thrives to keep a clean and safe space for its patients and employees.

We implemented a safety protocols and procedures that must be followed by all patients and employees

We provide COVID-19 tests for public under government regulation

We formed a COVID-19 Task Force to ensure our prompt responses during the pandemic

We provide varies of training and education regarding the latest COVID-19 information and protocols for all employees

We are strongly committed to ensure all the medical staffs wear the personal protective equipment according to the levels of infection risk zone

We ensure that our medical employees are tested regulary for safety reasons while performing their duties at the hospitals

COVID-19 TESTING OVERVIEW*



PCR & Isothermal Test

105,870

cases have been tested



Rapid & Serology Test

278,003

cases have been tested

**as of 31 October 2021*

ANTICIPATION OF COVID-19

EMC Healthcare dedicated all of its hospitals to treat COVID-19 Patients.

RS EMC Alam Sutera *

561

cases have been treated

RS EMC Cikarang *

650

cases have been treated

RS EMC Pekayon *

1,631

cases have been treated

RS EMC Pulomas *

737

cases have been treated

RS EMC Sentul *

523

cases have been treated

RS EMC Tangerang *

819

cases have been treated

**as of 31 October 2021*

VACCINATION DRIVE

Supporting the government programme on COVID-19 vaccination, throughout the year EMC Healthcare is at the frontline to provide the vaccination for public.

As of 31 October 2021,

127,665 

people has been vaccinated in a range of:

1. Elderly
2. Health workers
3. Public officers
4. Private workers
5. Gotong Royong Vaccination (in terms of the government programme)
6. Others

with type of vaccine:

Sinovac, Moderna, Sinopharm, Astrazeneca, Pfizer.

HOSPITAL UNITS	LOCATION
AS	RS EMC Alam Sutera
CK	RS EMC Pekayon
PKY	Cikarang Industry Area
PM	RS EMC Pulomas
STL	RS EMC Sentul
TANG	RS EMC Tangerang, BNN Jakarta, Pasar Anyar Tangerang, Puspem Tangerang, Dinkes Tangerang.



Vaksinasi COVID-19 Pfizer
Hadir di **Kota Kasablanka**

Senin – Jumat
Dosis 1 : 6–10 Sept 2021 | 9.00 – 14.00 WIB
Dosis 2 : 27 Sept–1 Okt 2021 | 9.00 – 12.00 WIB

Target penerimaan **vaksin COVID-19 Pfizer**

- WNI ber **KTP DKI Jakarta** atau WNI domisili Jakarta (membawa surat domisili yang dikeluarkan oleh RT setempat)
- Masyarakat berusia **12 tahun keatas** (dibawah 17 tahun membawa Fotocopy KARTU KELUARGA, diperbolehkan hanya 1 pendamping)
- **Belum pernah** mendapatkan vaksinasi COVID-19 dosis 1 dan 2
- Ibu hamil dan ibu menyusui, serta memiliki kondisi immunocompromised seperti autoimun, komorbid berat, penyakit kronis, dan gangguan imunologi lainnya (**harus disertai keterangan dokter**)

Pendaftaran melalui link ini : corona.jakarta.go.id/vaksinasi



DILARANG MASUK
bagi anak dibawah usia 12 tahun

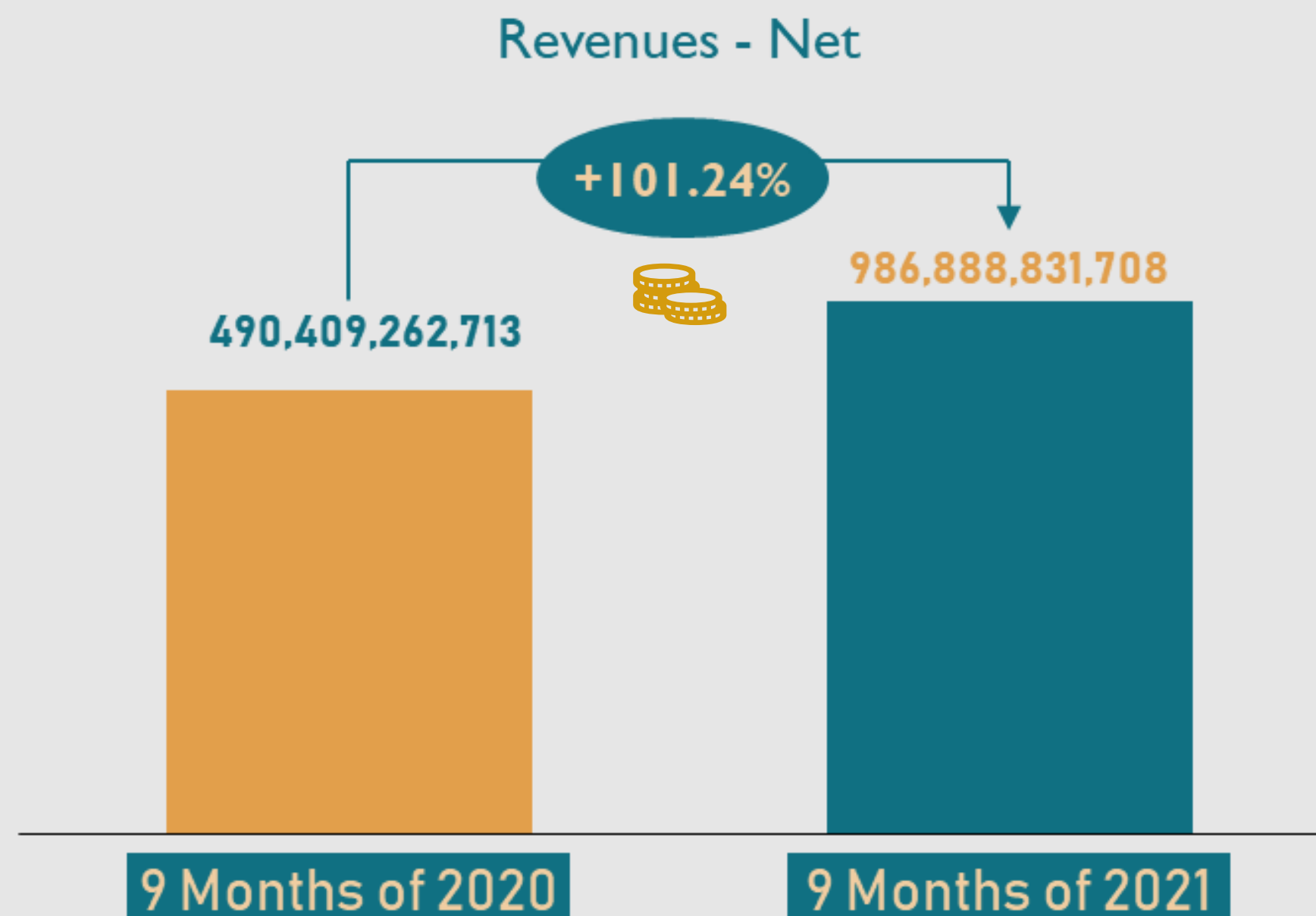
TERBATAS

AGENDA 3

PERFORMANCE REVIEW

REVENUE PERFORMANCE

9 months of 2021 compared to 9 months of 2020



PROFIT OR LOSS PERFORMANCE

9 months of 2021 compared to 9 months of 2020

INFORMATION	9 MONTHS OF 2021	9 MONTHS OF 2020*
Margin of Gross Profit	45%	29%
Margin of Operating Profit (Loss)	19%	-84%
Margin of Net Profit (Loss)	15%	-93%
Earnings (Loss) per share (full amount)	24,59	-69,94

* Restated 2020

INFORMATION	9 MONTHS OF 2021	9 MONTHS OF 2020*	INCREASE (DECREASE)
REVENUES -NET	986,888,831,708	490,409,262,713	101.24%
COST OF REVENUES	546,515,204,742	348,982,189,217	56.60%
GROSS PROFIT	440,373,626,966	141,427,073,496	211.38%
Selling expenses	(3,033,234,314)	(3,126,382,269)	-2.98%
General and administrative expenses	(240,354,995,295)	(214,031,275,454)	12.30%
Loss on impairment of fixed assets	(6,536,062,762)	(338,819,303,140)	-98.07%
Loss on sale/dispose of property and equipment	(651,392,618)	(291,944,278)	123.12%
Other operating income (expense) - net	(5,528,473,570)	2,096,629,224	-363.68%
OPERATING INCOME (LOSS)	184,269,468,407	(412,745,202,420)	144.64%
Interest and financial charges - net	(28,125,996,591)	(72,806,300,011)	-61.37%
INCOME (LOSS) BEFORE TAX	156,143,471,816	(485,551,502,431)	132.16%
Income Tax Expenses	(11,029,189,245)	(44,189,578,819)	-75.04%
INCOME (LOSS) AFTER MERGING ENTITIES' LOSS ADJUSTMENT	145,114,282,571	(529,741,081,250)	127.39%
Merging entities' loss	1,582,895,279	72,079,308,372	-97.80%
INCOME (LOSS) BEFORE MERGING ENTITIES' LOSS ADJUSTMENT	146,697,177,850	(457,661,772,878)	132.05%
Income (loss) before merging entities' loss adjustment attributable to:			
Owners of the Parent Entity	147,175,926,016	(457,658,689,857)	132.16%
Non-controlling interest	(478,748,166)	(3,083,021)	-15428.54%

FINANCIAL POSITION

As of 30 September 2021

INFORMATION	30 SEPTEMBER 2021	31 DECEMBER 2020	INCREASE (DECREASE)
ASSETS			
Total Current Assets	1,255,377,867,787	248,540,436,203	405.10%
Total Non-Current Assets	3,272,607,665,355	2,749,906,903,817	19.01%
Total Assets	4,527,985,533,142	2,998,447,340,020	51.01%
LIABILITIES			
Total Current Liabilities	183,814,451,218	373,494,499,764	-50.79%
Total Non-current Liabilities	121,755,055,588	1,113,876,592,103	-89.07%
Total Liabilities	305,569,506,806	1,487,371,091,867	-79.46%
EQUITY			
Total Equity attributable to Owners of the Company	4,026,864,956,797	545,815,501,864	637.77%
Merging entities' equity	-	816,943,236,791	-100.00%
Non-controlling interests	195,551,069,539	148,317,509,498	31.85%
Total Equity	4,222,416,026,336	1,511,076,248,153	179.43%

CASH FLOWS

9 months of 2021 compared to 9 months of 2020

INFORMATION	9 MONTHS OF 2021	9 MONTHS OF 2020	INCREASE (DECREASE)
Cash Flows From Operating Activities	109,857,572,706	47,205,884,768	132.72%
Cash Flows From Investing Activities	(1,771,911,403,793)	(65,783,887,429)	(2593.53%)
Cash Flows From Financing Activities	2,529,496,488,807	41,027,286,665	6065.40%
Net Increase in Cash and Cash Equivalents	867,442,657,720	22,449,284,004	3764.01%
Cash and Cash Equivalent at Beginning of the Period	50,361,003,048	22,702,166,408	121.83%
Cash and Cash Equivalent at Ending of the Period	917,803,660,768	45,151,450,412	1932.72%

Q&A

Session



THANK YOU